



Wimberley Valley Trails

VIRTUAL PUBLIC MEETING

03/25/2021

Project Team



James Sassin, Project Manager

Mark Miller



Summer Lawton



Commissioner Lon Shell

Jerry Borcharding

Lindsay McClune

Winton Porterfield

Alexandra Thompson



THE GOODMAN
CORPORATION

Robert McHaney



Walter Heard

Marc Zak



Claudia Arniella

Natalia Riusech

Agenda

1

Project Overview

2

Timeline and What we Heard

3

Proposed Concepts

4

Discussion

5

How to Share Input



Live Poll Question

How do you hope to use a future trail system?
Select all that apply.

- Getting around town
- Walking / Running
- Biking
- Picnics
- Enjoying Nature
- Social gatherings
- Taking kids for walks/bike rides
- Other (Please describe in chat box)



Project Focus

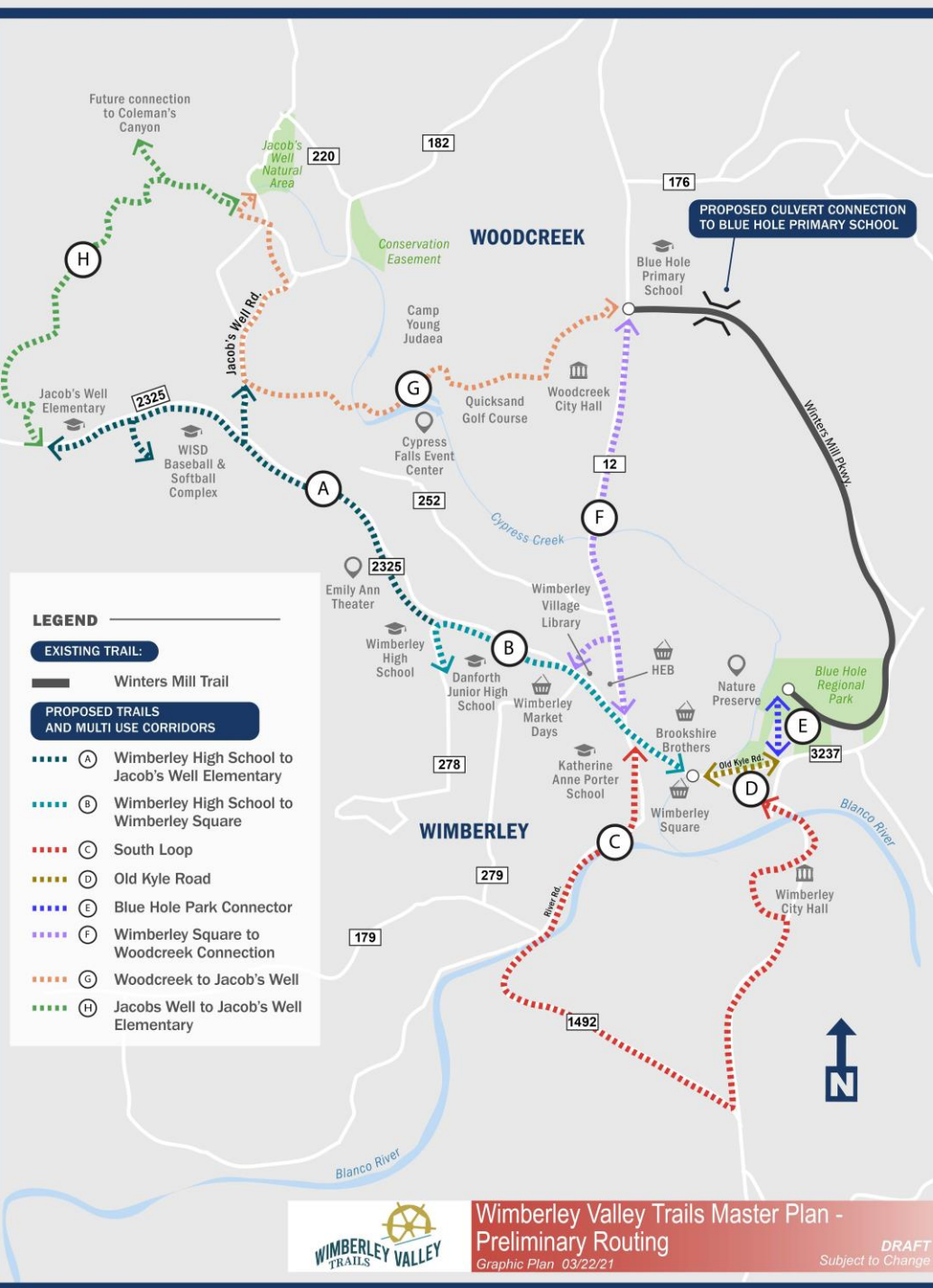


Develop a multi-year vision to **improve connectivity, safety, and mobility** in Wimberley and Woodcreek through:

- A system of sidewalks and multi use trails
- A variety of transportation and mobility options
- Other strategies to help connect people with nature and link points of interest in the community



Identify improvements and design sidewalks and trails along **Old Kyle Road** and **Ranch Road 2325** to Wimberley Square.



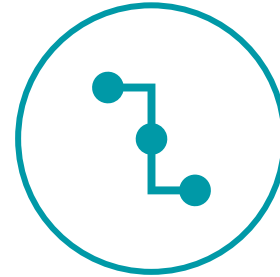
Project Overview



Involve the community.



Develop a design based on the history, culture, and natural environment of the region.



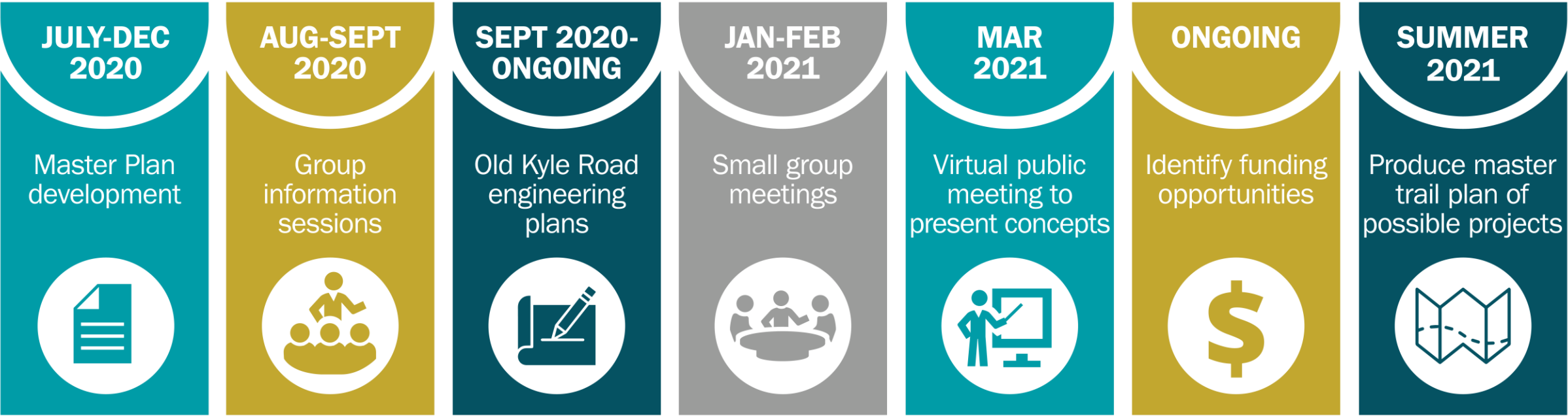
Improve connections to points of interests such as parks, schools, and local businesses.



Improve safety, mobility, and connectivity.



Project Timeline



The outcome of this effort will be a Master Plan of possible trails and improvement projects .
To complete these projects, additional steps would be required including securing funding, environmental evaluation and coordination between the County, Cities, and local partners.



Qualifying for Local, State and Federal Funding

Hays County and the City of Wimberley are actively pursuing funding opportunities including funding from:

- US Department of Transportation (USDOT)
- Texas Department of Transportation (TxDOT)
- Capital Area Metropolitan Areas (CAMPO)
- Economic Development Administration (EDA)
- Texas Parks and Wildlife Department (TPWD)





Trail Master Plan Approach and Considerations

- Improve Connectivity, Safety, and Mobility
- Protect Environment and Promote Sustainability
- Outdoor gathering spaces, Nature Observation and Classrooms
- Interpretation boards, Signage, and Wayfinding
- Enhance Local Character / Stimulate Economic Growth

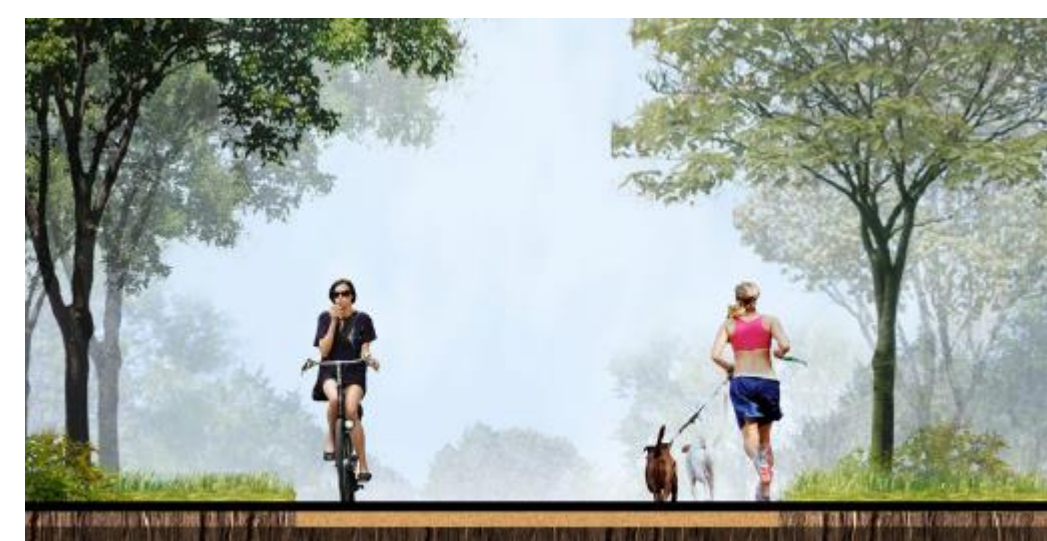
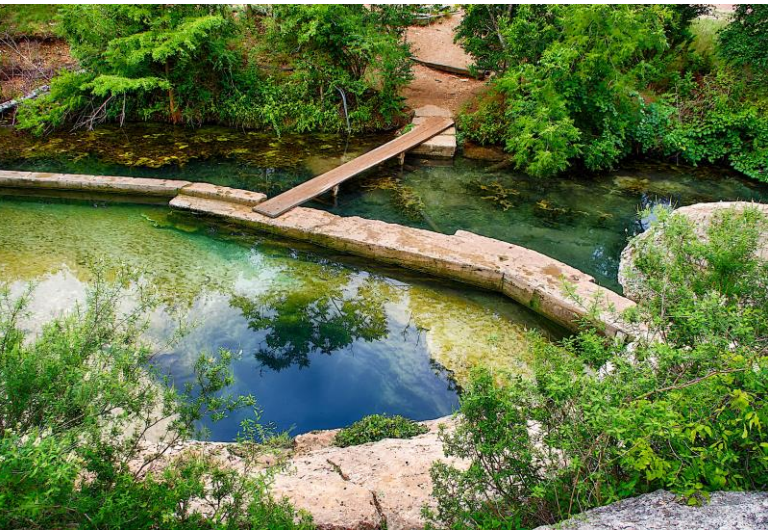




Improve Connectivity

Safety, Accessibility, and Mobility

WHAT WE HEARD

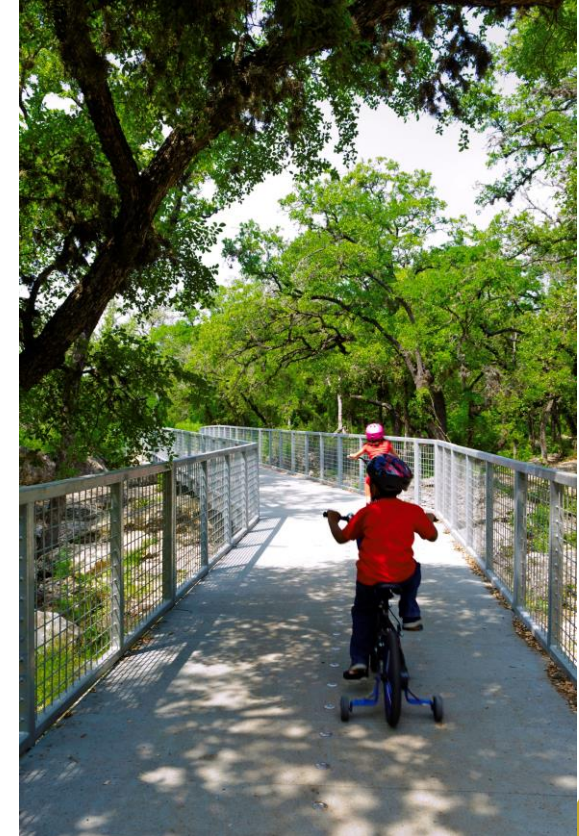




Improve Connectivity

Safety, Accessibility, and Mobility

WHAT WE HEARD





Protect the Environment and Promote Sustainability

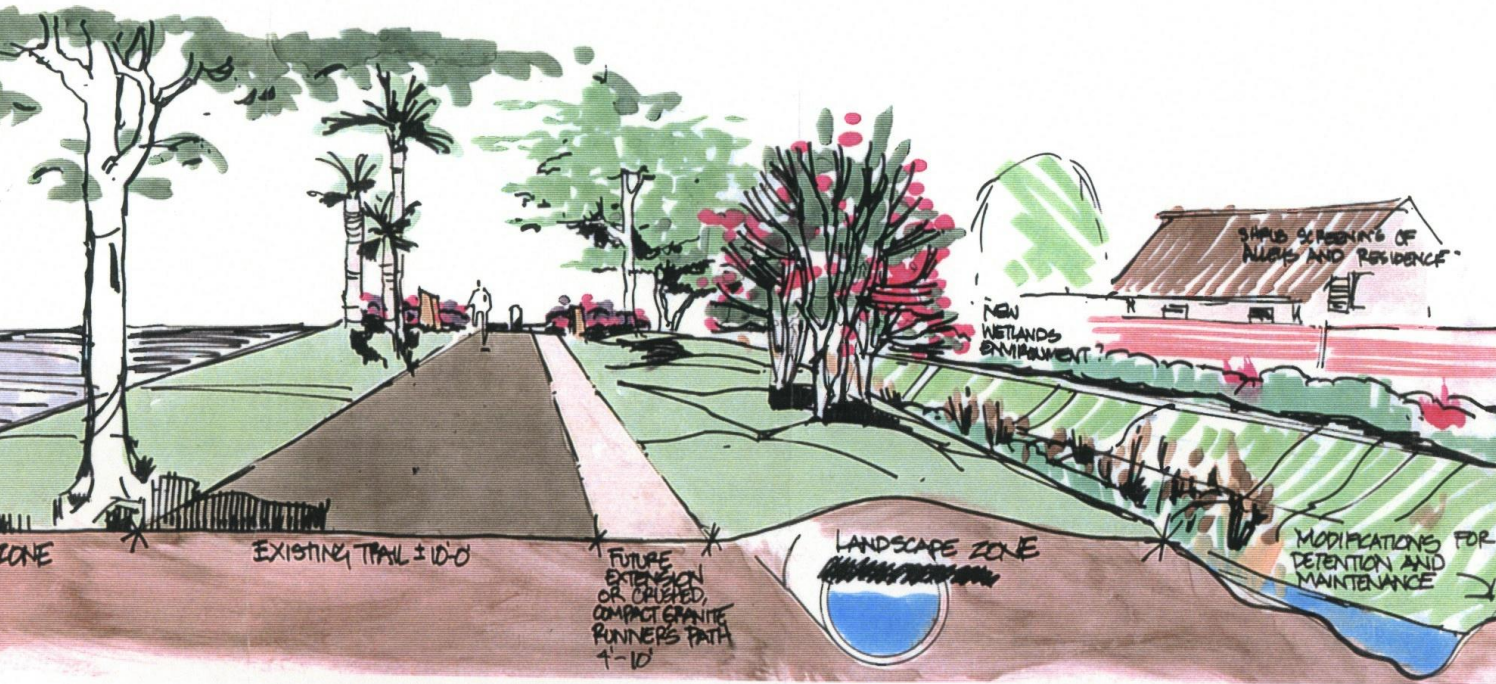
WHAT WE HEARD





Protect the Environment and Promote Sustainability

WHAT WE HEARD



Sustainable Design



Outdoor gathering spaces, Nature Observation and Classrooms

WHAT WE HEARD



OUTDOOR CLASSROOM



Interpretation Boards, Signage, Wayfinding



WHAT WE HEARD



Enhance Local Character and Stimulate Local Investment

WHAT WE HEARD





Proposed Connections and Design Concepts Discussion



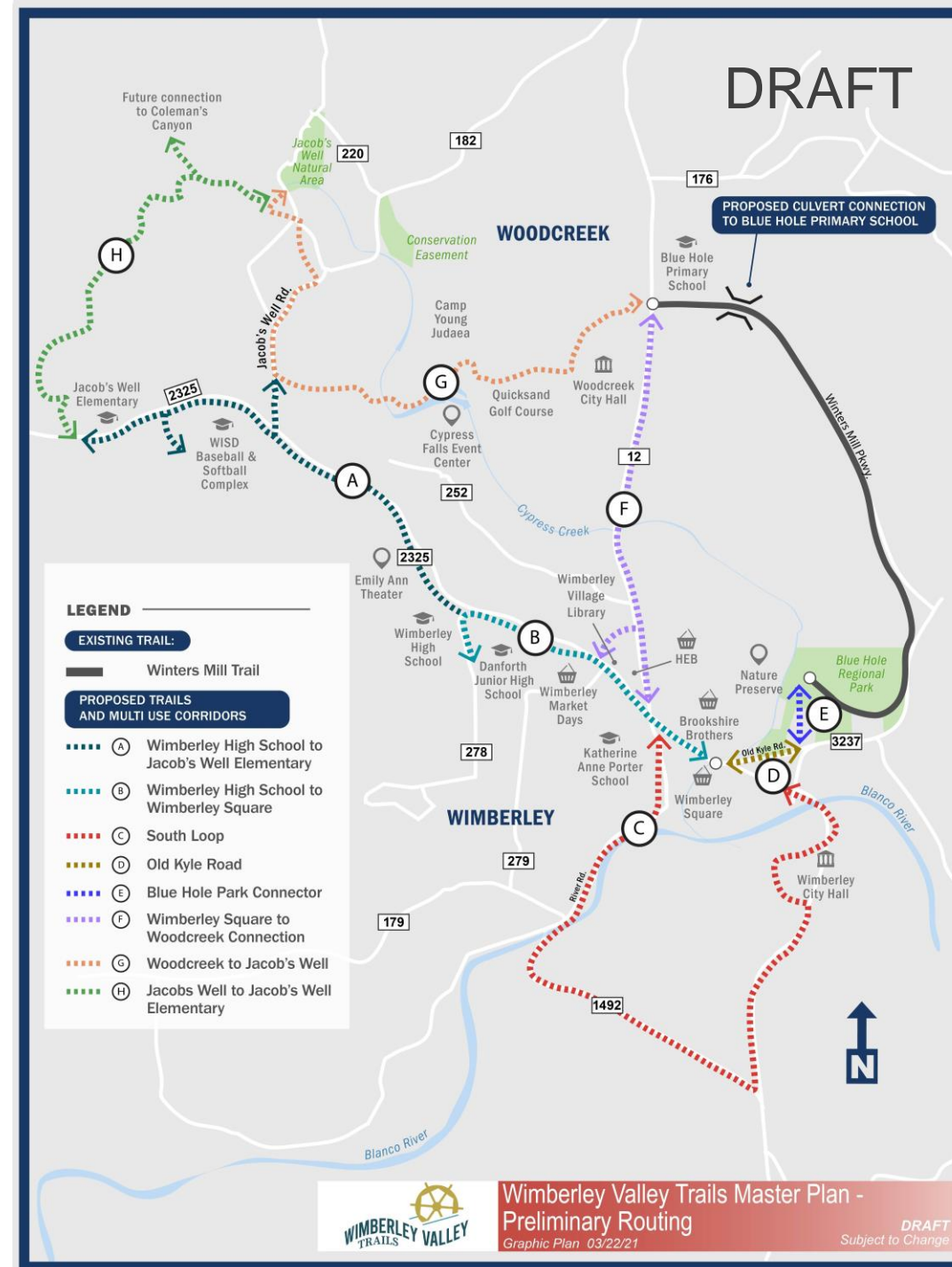
What the Trail Could Look Like

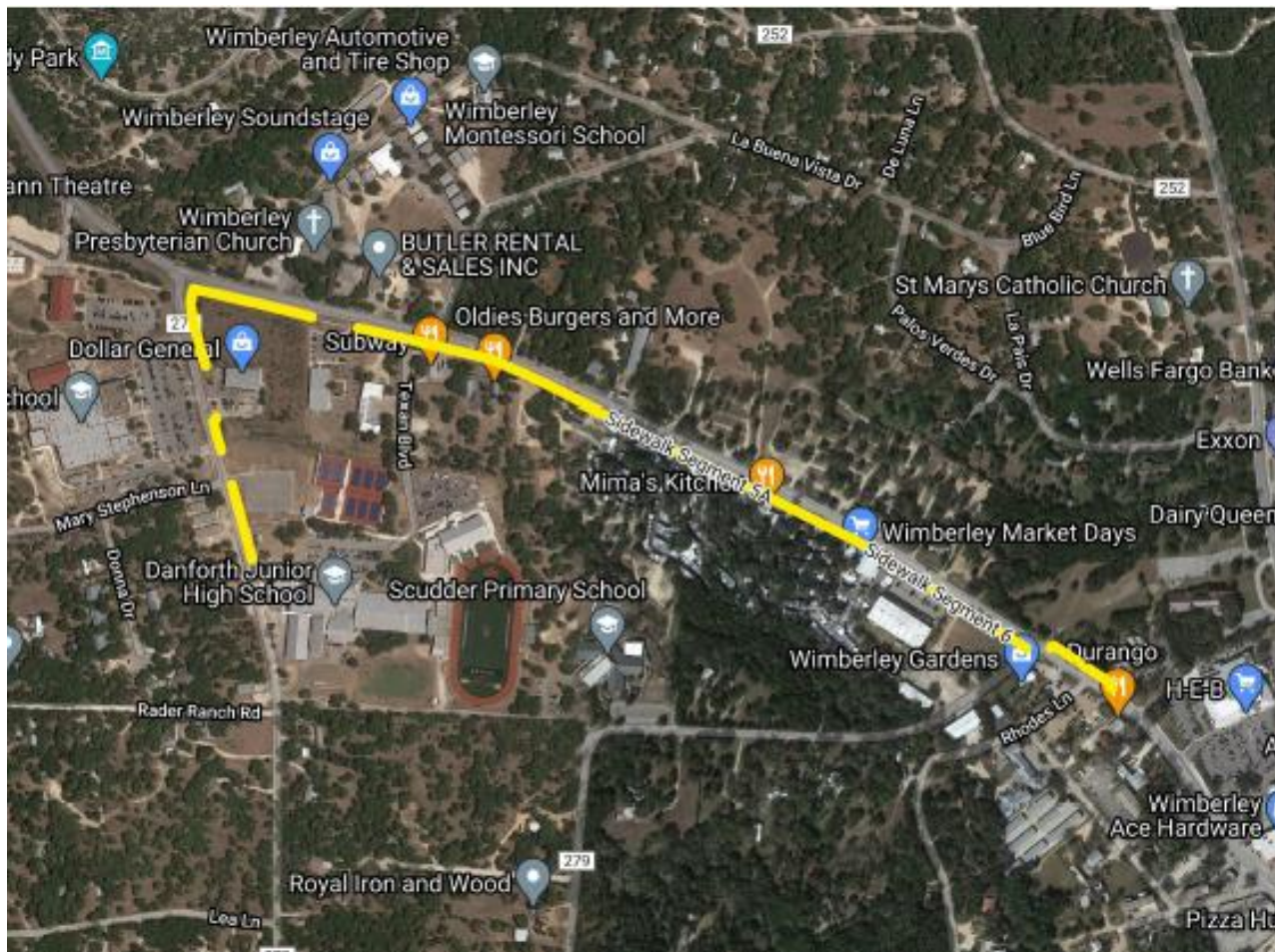
- Phased Development based on Funding and Local Priorities
- Directional Signage and Wayfinding
- Durability and Design Character
- Dark Skies Compliant Lighting
- Native Landscaping and Nature Viewing Areas
- Trailheads and Amenities



Proposed Connections

- Neighborhoods
- Parks
- Schools
- Institutions
- Shopping Districts
- Historical Sites
- Recreational Opportunities





Wimberley High School to Wimberley Square

PURPOSE AND NEED

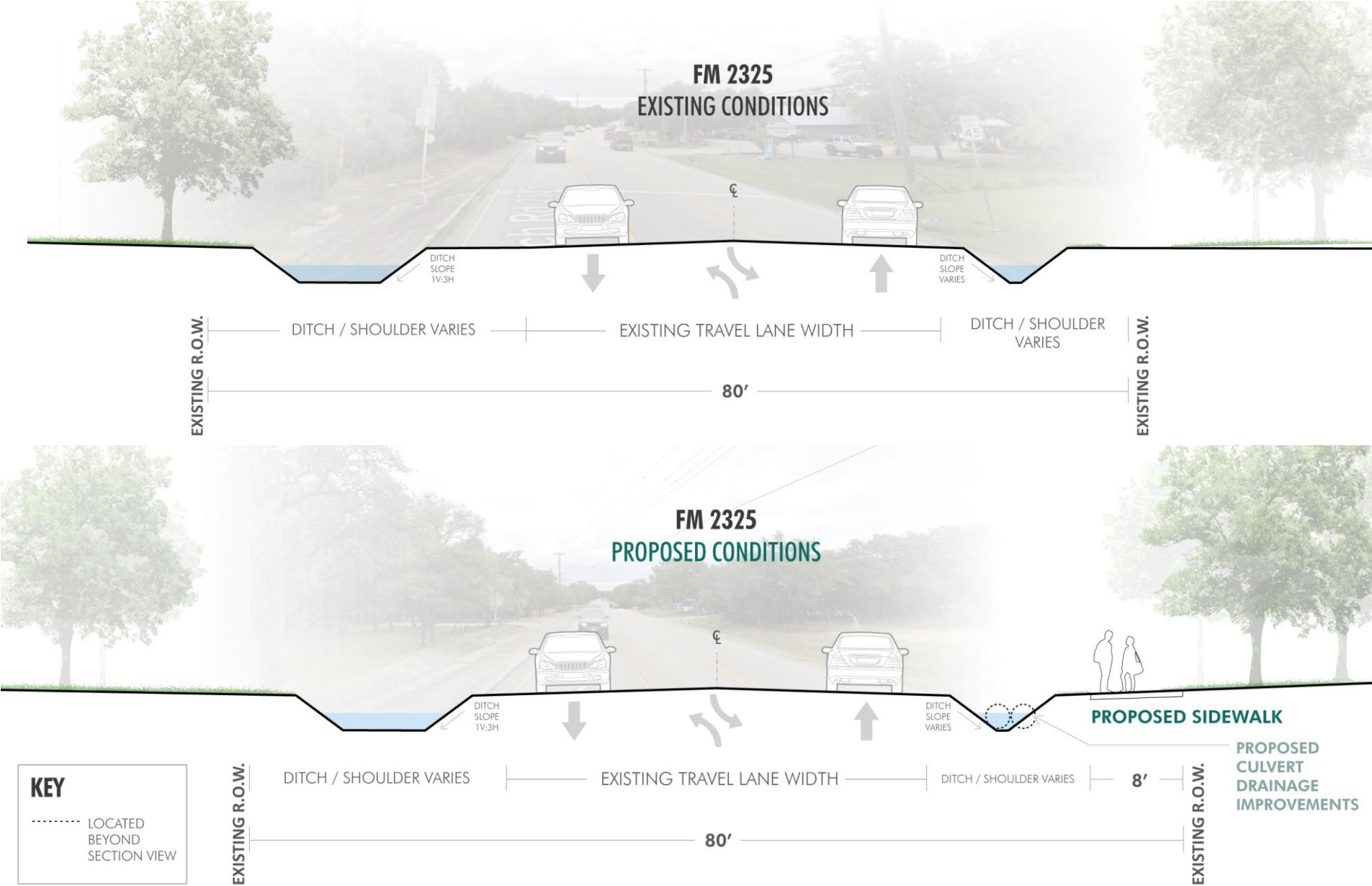
- The project would create a **safe and comfortable** pedestrian and bike connection to various land uses along the FM 2325 from Wimberley High School to Wimberley HEB.
- Currently, there is no to little pedestrian and/or bike access within the project limits. The shoulder width and vehicle speeds of this segment is **dangerous** for pedestrians and bicyclist.



Creates a Safe and Comfortable Connection

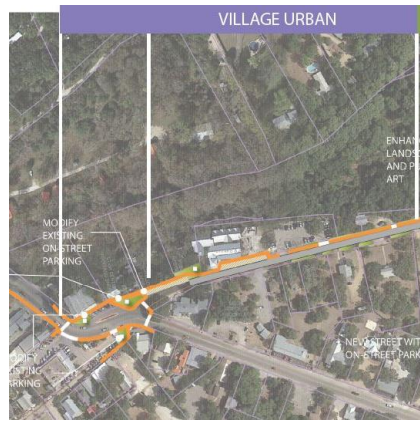
Wimberley High School ↔ Danforth Junior High School ↔ Wimberley Market Days ↔ Wimberley Village Library ↔ Wimberley HEB

Wimberley High School to Wimberley Square Typical Section



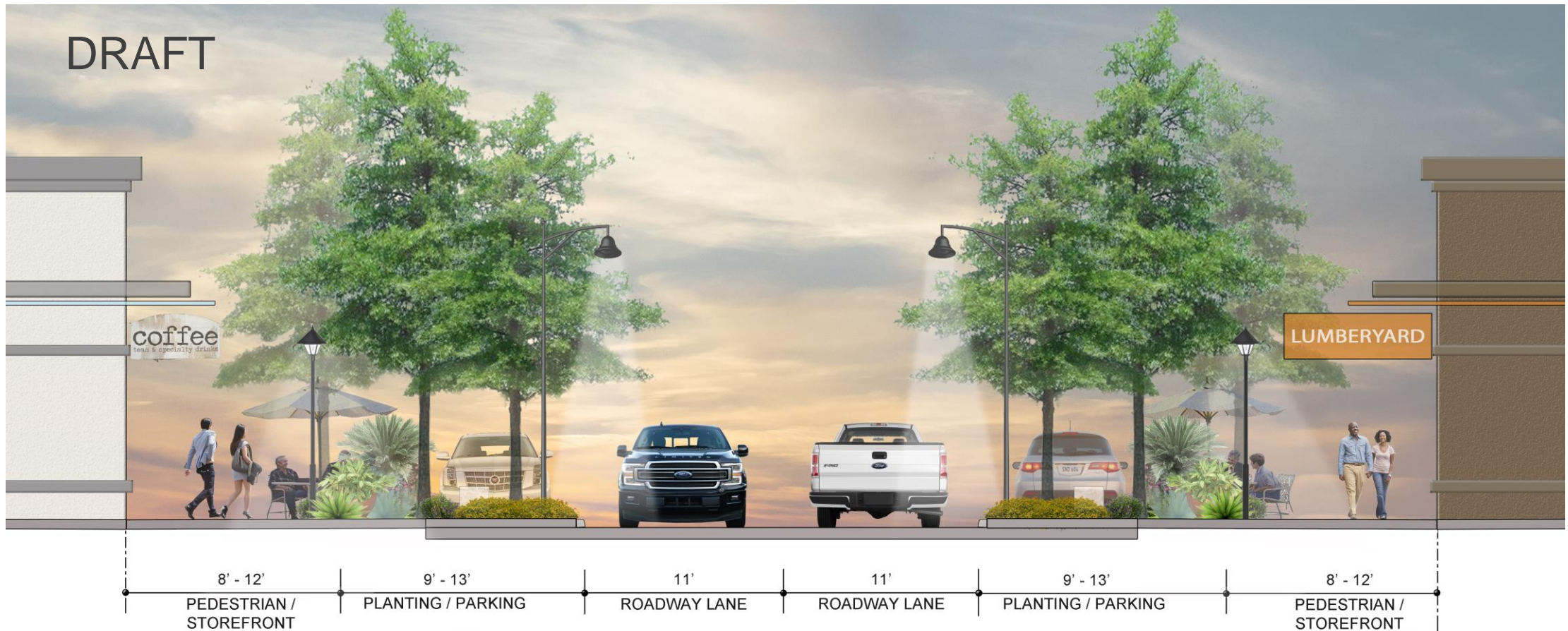
Old Kyle Road Concept





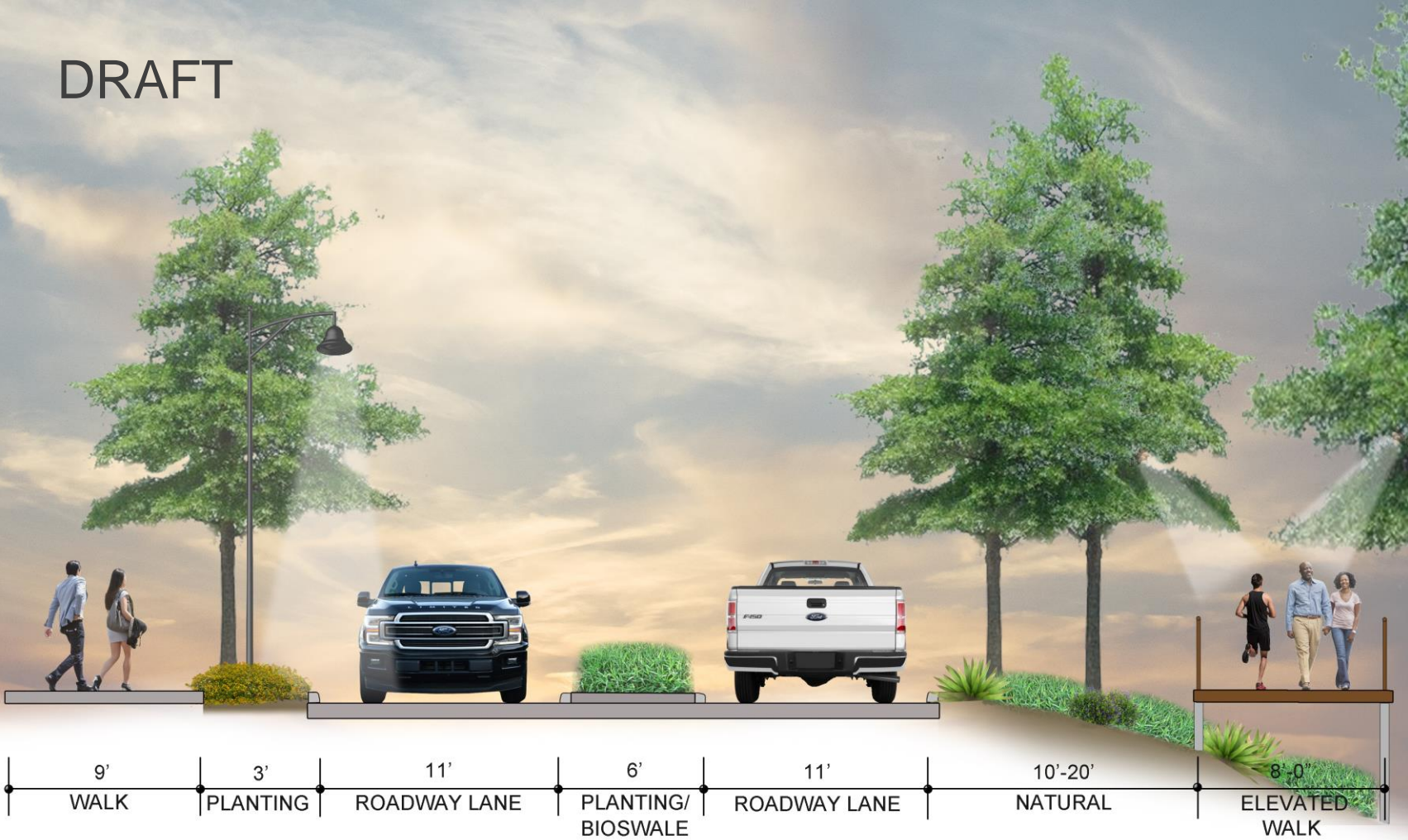
Old Kyle Road

Concept Village Urban

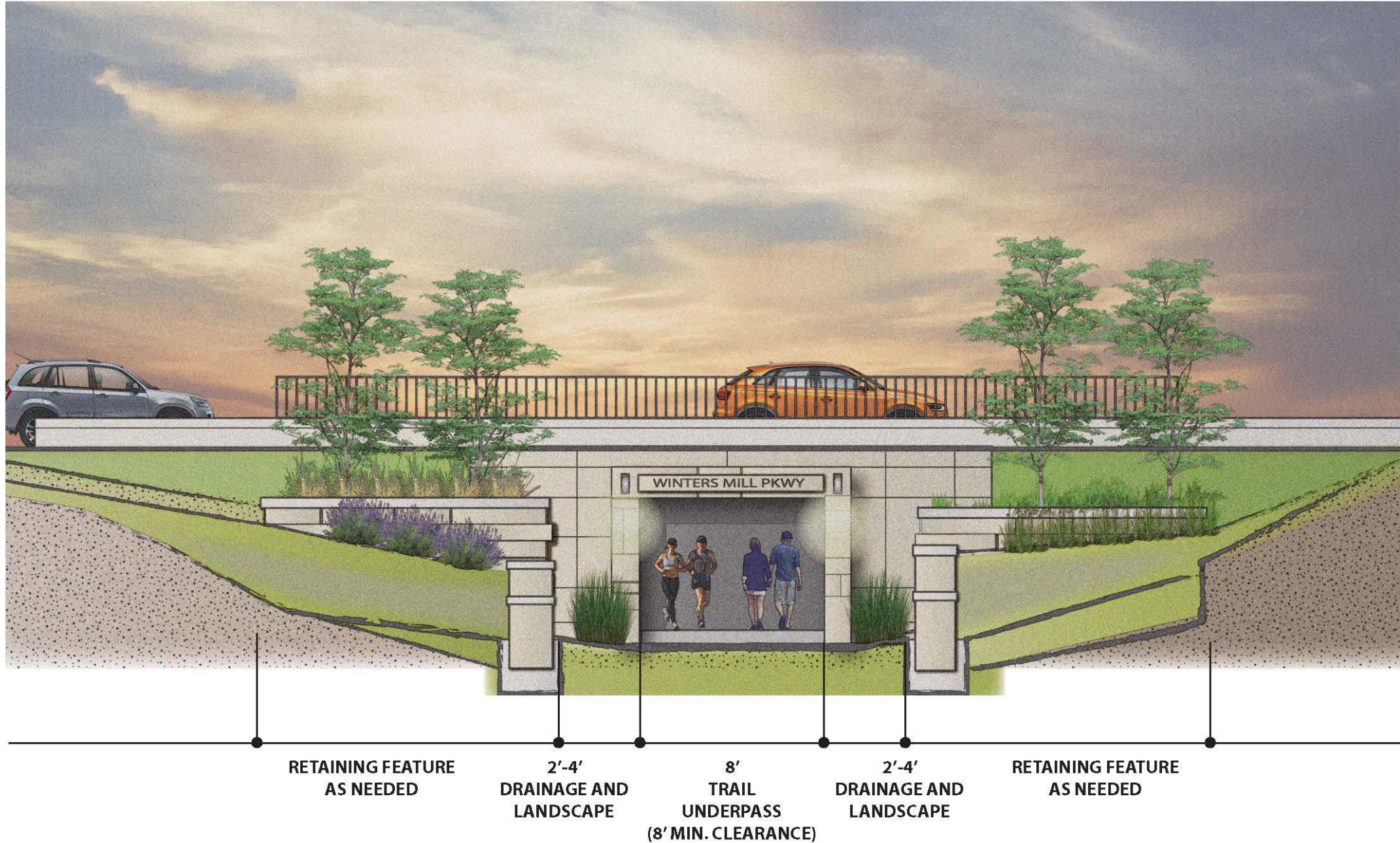


Old Kyle Road

Concept Village Parkway



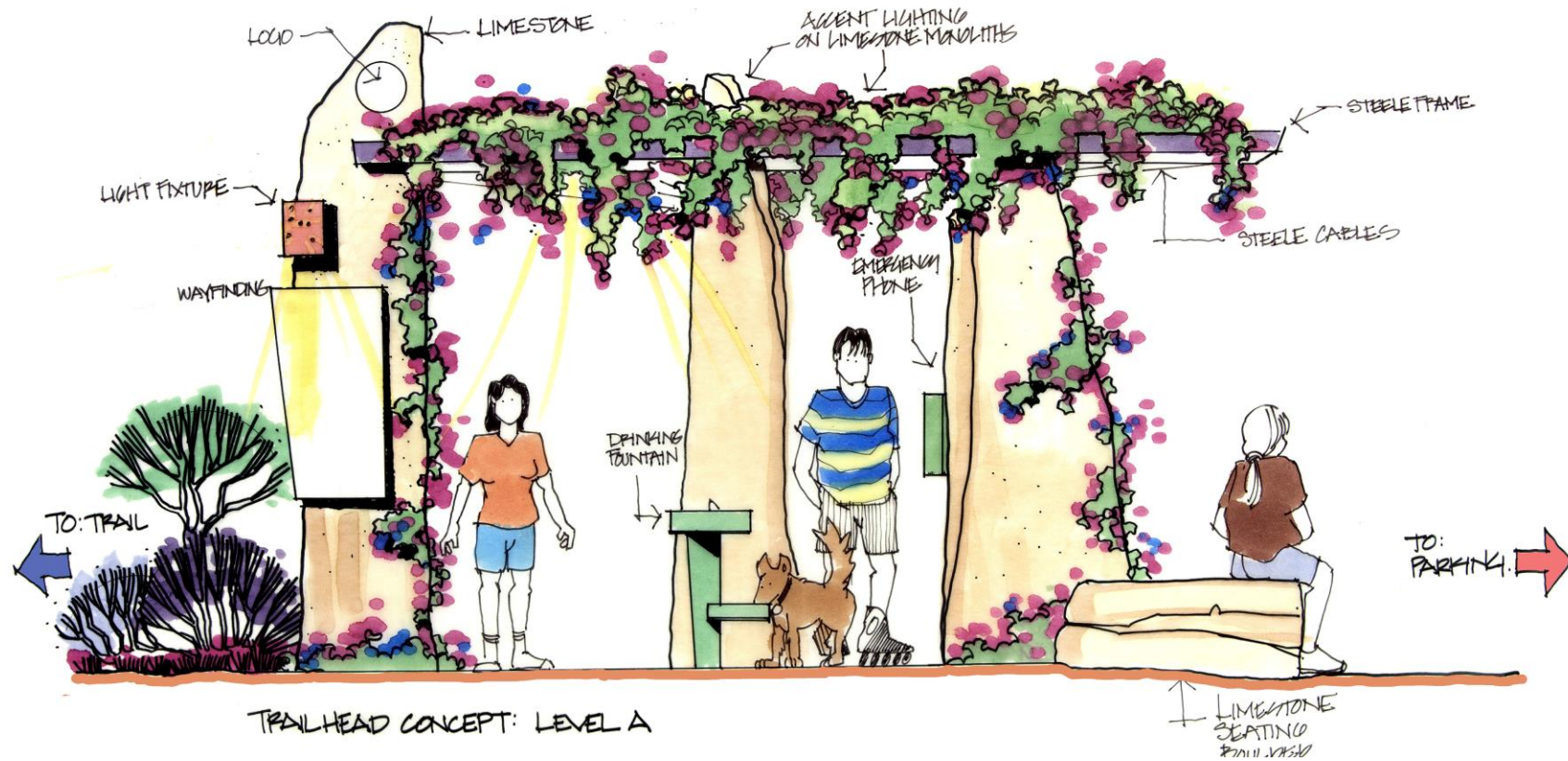
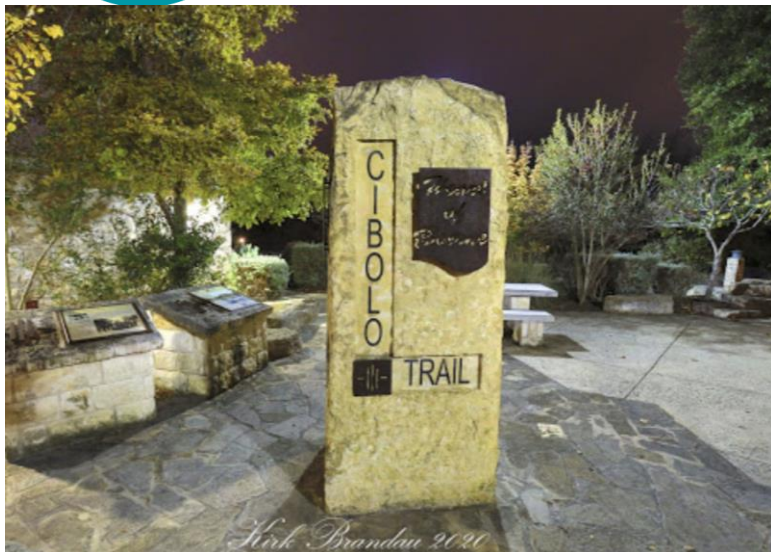
Winter's Mill Parkway Culvert





Trailheads, Signage, and Amenities

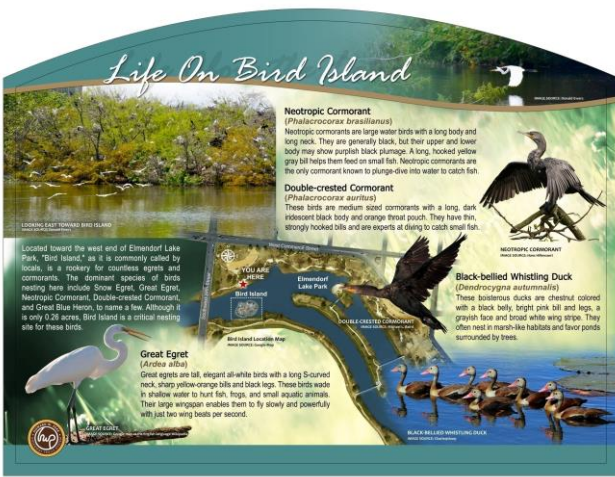
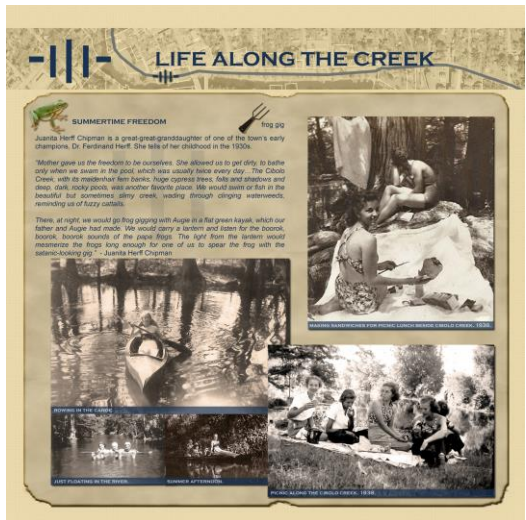
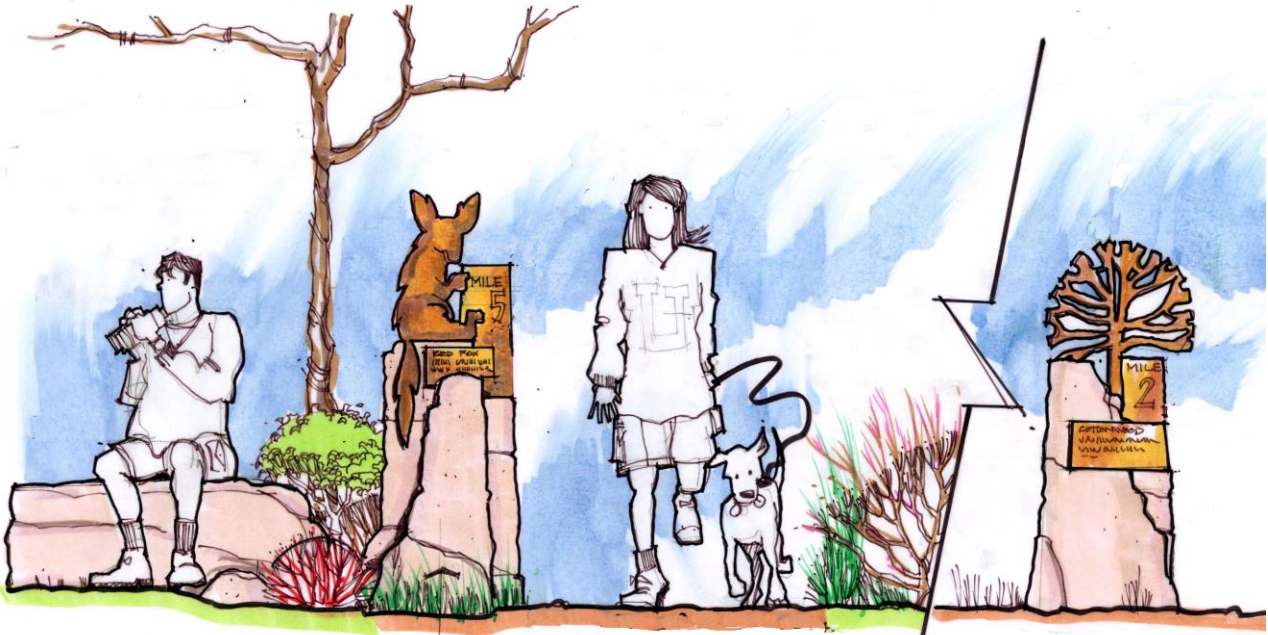
DESIGN CONCEPTS





Trailheads, Signage, and Amenities

DESIGN CONCEPTS





Trailheads, Directional Signage, and Amenities

DESIGN CONCEPTS





Durability and Design Character

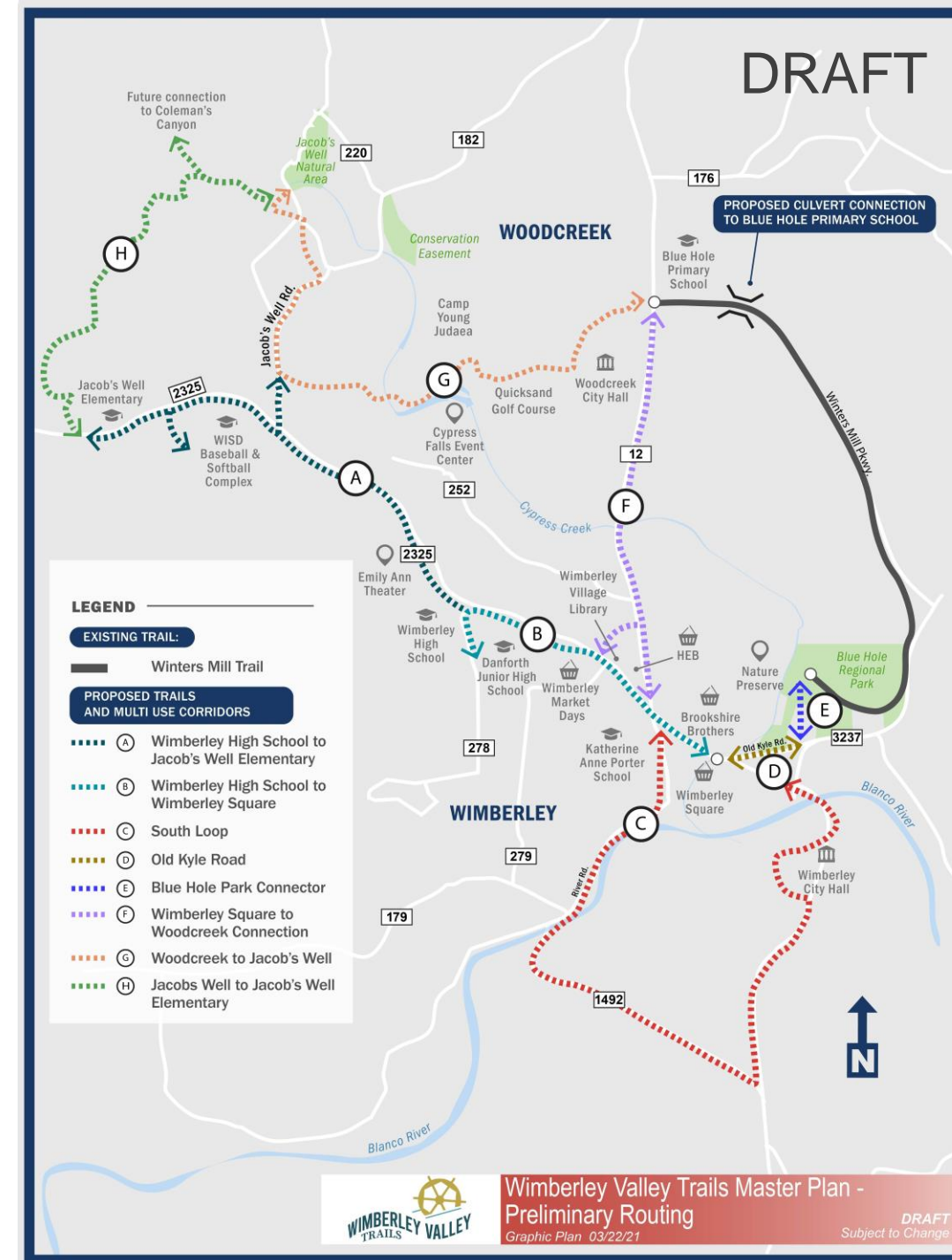
DESIGN CONCEPTS



LIVE POLL QUESTION

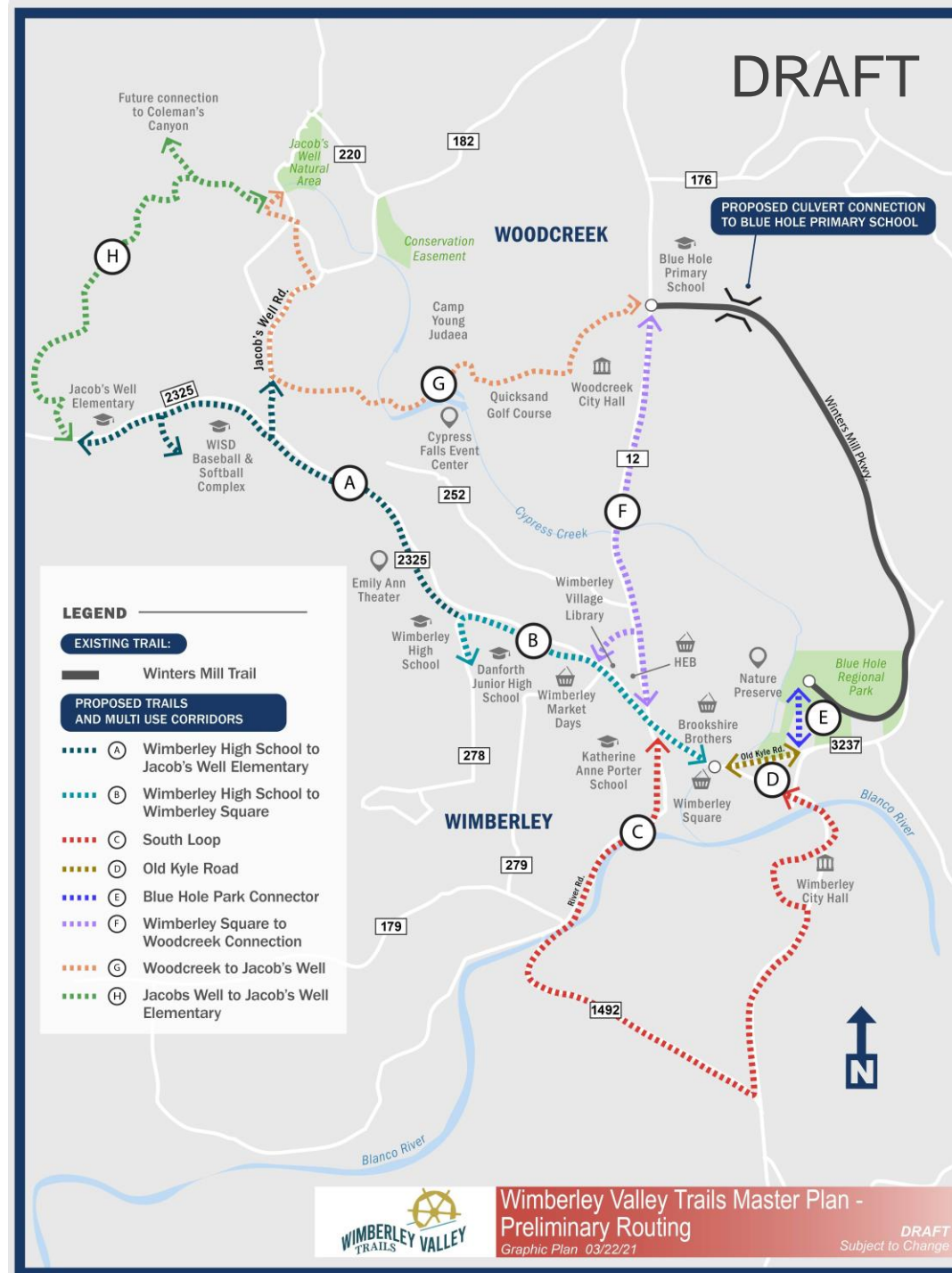
Of the possible multi use trail connections, which should be prioritized? Select all that apply.

- A - Wimberley High School to Jacob's Well
- B - Wimberley High School to Wimberley Square.
- C - South Loop
- D - Old Kyle Rd.
- E - Blue Hole Park Connector
- F - Wimberley Square to Woodcreek
- G - Woodcreek to Jacob's Well
- H - Jacob's Well to Jacob's Well Elementary



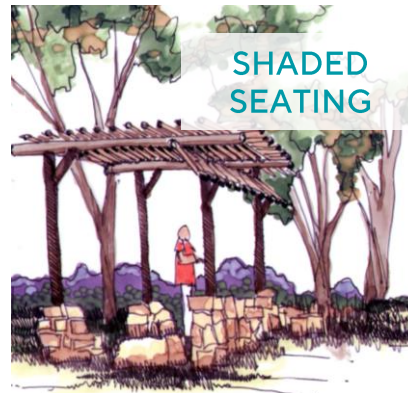
DISCUSSION

What are your thoughts on the possible trail connections presented?



LIVE POLL QUESTION

Which features and amenities should be prioritized?
(Select all that apply)



DISCUSSION

What else would you like to see?

We want to hear your thoughts!

View the map, take the survey, and leave comments:

WimberleyValleyTrails.com

You may also submit comments by phone, email, or mail.

Info@wimberleyvalleytrails.com

[\(512\) 436-3712](tel:(512)436-3712)

Comment Period: Thursday, Mar. 25 – Monday, Apr. 12

